

Session Name: 10-14-2022 9-47 AM

Date Created: 10/14/2022 9:26:08 AM

Active Participants: 17 of 17

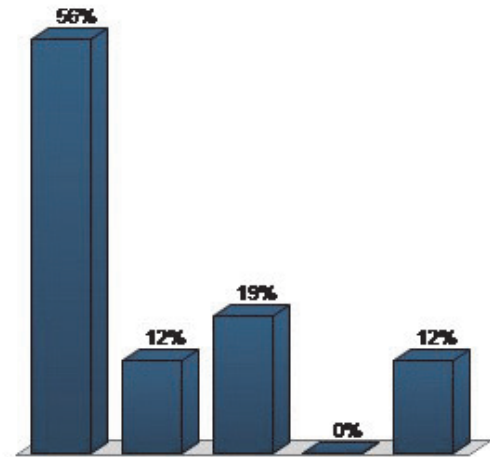
Average Score: 0.00%

Questions: 21

## Results by Question

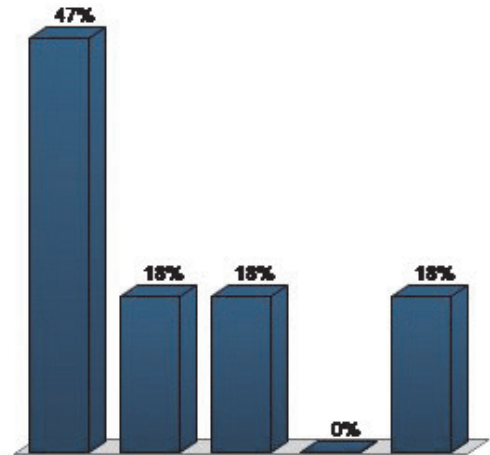
1. Practice Question 1: Indicate how strongly you agree or disagree with the following statement: I like eating fruit more than chocolate. (Multiple Choice)

Responses		
	Percent	Count
Low Priority	56.25%	9
Somewhat Priority	12.5%	2
Moderate Priority	18.75%	3
Important Priority	0%	0
High Priority	12.5%	2
<b>Totals</b>	<b>100%</b>	<b>16</b>



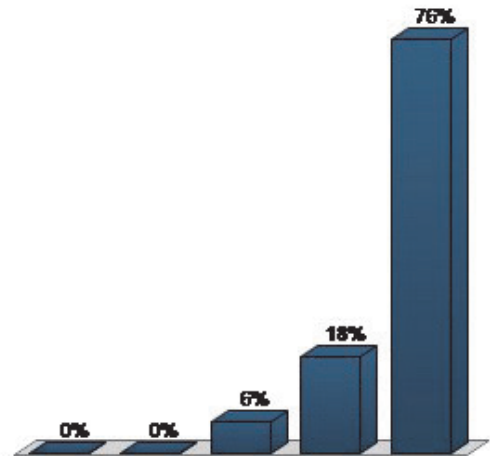
**2. Practice Question 1: Indicate how strongly you agree or disagree with the following statement: I like eating fruit more than chocolate. (Multiple Choice)**

Responses		
	Percent	Count
Low Priority	47.06%	8
Somewhat Priority	17.65%	3
Moderate Priority	17.65%	3
Important Priority	0%	0
High Priority	17.65%	3
<b>Totals</b>	<b>100%</b>	<b>17</b>



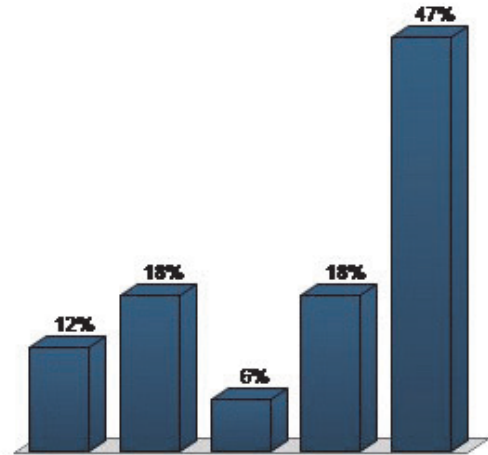
**3. Practice Question 2: How important is customer service to you? (Multiple Choice)**

Responses		
	Percent	Count
Low Priority	0%	0
Somewhat Priority	0%	0
Moderate Priority	5.88%	1
Important Priority	17.65%	3
High Priority	76.47%	13
<b>Totals</b>	<b>100%</b>	<b>17</b>



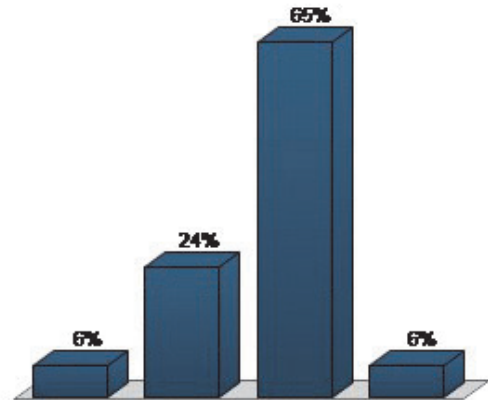
**4. Practice Question 2: How important is customer service to you? (Multiple Choice)**

Responses		
	Percent	Count
Low Priority	11.76%	2
Somewhat Priority	17.65%	3
Moderate Priority	5.88%	1
Important Priority	17.65%	3
High Priority	47.06%	8
<b>Totals</b>	<b>100%</b>	<b>17</b>



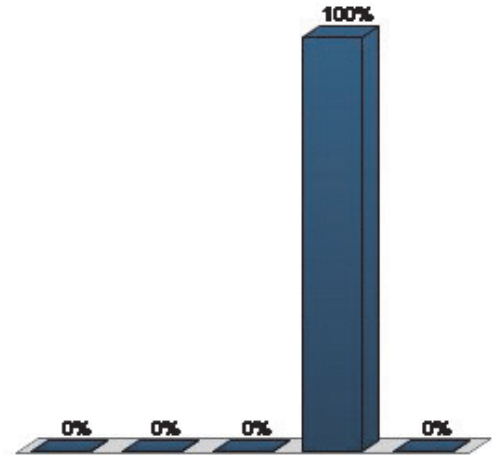
**5. What percentage of ARPA funding should be held in reserve until 2023? (Multiple Choice)**

Responses		
	Percent	Count
25%	5.88%	1
15%	23.53%	4
10%	64.71%	11
0%	5.88%	1
<b>Totals</b>	<b>100%</b>	<b>17</b>



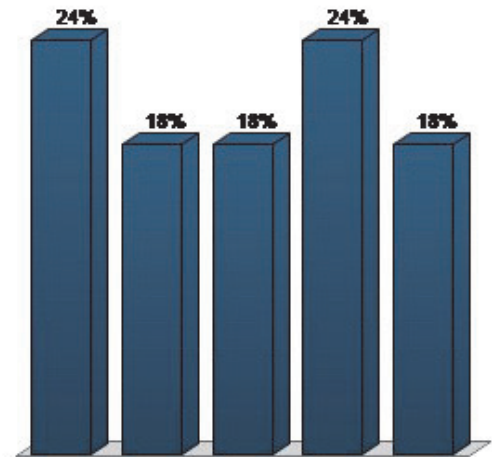
**6. Internal Project #1: Broadband Installation (Multiple Choice)**

	Responses	
	Percent	Count
Low Priority	0%	0
Somewhat Priority	0%	0
Moderate Priority	0%	0
Important Priority	100%	1
High Priority	0%	0
<b>Totals</b>	<b>100%</b>	<b>1</b>



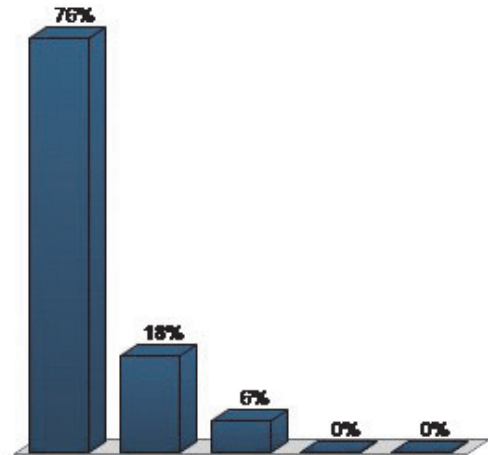
**7. Internal Project #1: Broadband Installation (Multiple Choice)**

	Responses	
	Percent	Count
Low Priority	23.53%	4
Somewhat Priority	17.65%	3
Moderate Priority	17.65%	3
Important Priority	23.53%	4
High Priority	17.65%	3
<b>Totals</b>	<b>100%</b>	<b>17</b>



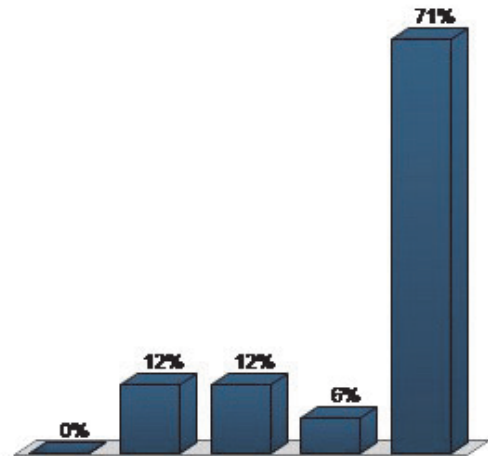
**8. Internal Project #2: Organizational Development and Employee Wellbeing and Development (Multiple Choice)**

Responses		
	Percent	Count
Low Priority	76.47%	13
Somewhat Priority	17.65%	3
Moderate Priority	5.88%	1
Important Priority	0%	0
High Priority	0%	0
<b>Totals</b>	<b>100%</b>	<b>17</b>



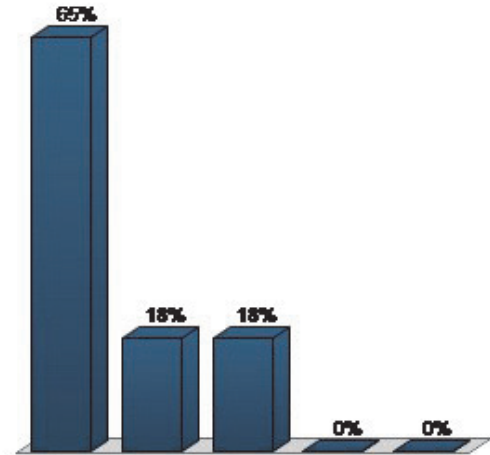
**9. Internal Project #3: Behavioral Health Crisis Center (Multiple Choice)**

Responses		
	Percent	Count
Low Priority	0%	0
Somewhat Priority	11.76%	2
Moderate Priority	11.76%	2
Important Priority	5.88%	1
High Priority	70.59%	12
<b>Totals</b>	<b>100%</b>	<b>17</b>



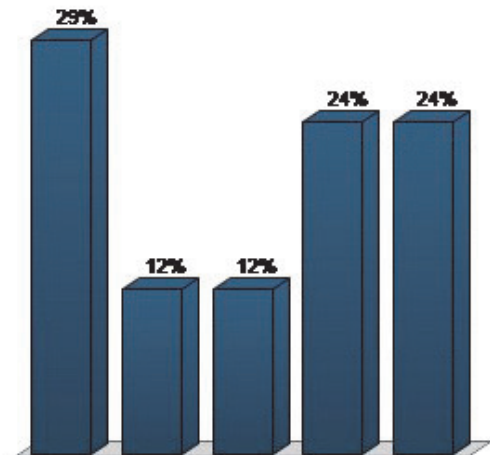
**10. Internal Project #4: Kent County Insurance Authority (Multiple Choice)**

Responses		
	Percent	Count
Low Priority	64.71%	11
Somewhat Priority	17.65%	3
Moderate Priority	17.65%	3
Important Priority	0%	0
High Priority	0%	0
<b>Totals</b>	<b>100%</b>	<b>17</b>



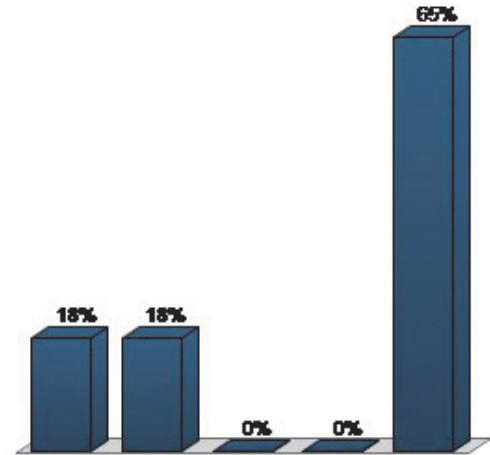
**11. Internal Project #5: South, North or Kentwood Landfill – PFAS Treatment Facility (Multiple Choice)**

Responses		
	Percent	Count
Low Priority	29.41%	5
Somewhat Priority	11.76%	2
Moderate Priority	11.76%	2
Important Priority	23.53%	4
High Priority	23.53%	4
<b>Totals</b>	<b>100%</b>	<b>17</b>



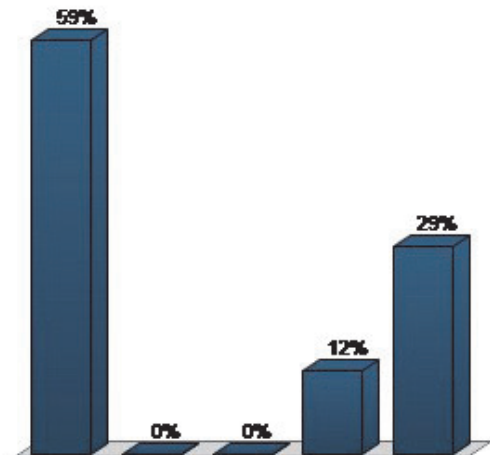
**12. Internal Project #6: Medical Examiner Facility (Multiple Choice)**

Responses		
	Percent	Count
Low Priority	17.65%	3
Somewhat Priority	17.65%	3
Moderate Priority	0%	0
Important Priority	0%	0
High Priority	64.71%	11
<b>Totals</b>	<b>100%</b>	<b>17</b>



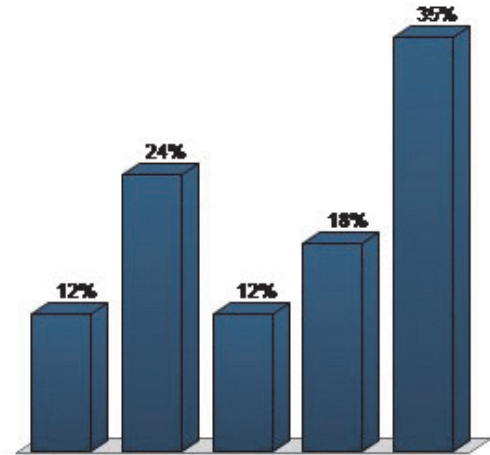
**13. Internal Project #7: New County Administration Building (Multiple Choice)**

Responses		
	Percent	Count
Low Priority	58.82%	10
Somewhat Priority	0%	0
Moderate Priority	0%	0
Important Priority	11.76%	2
High Priority	29.41%	5
<b>Totals</b>	<b>100%</b>	<b>17</b>



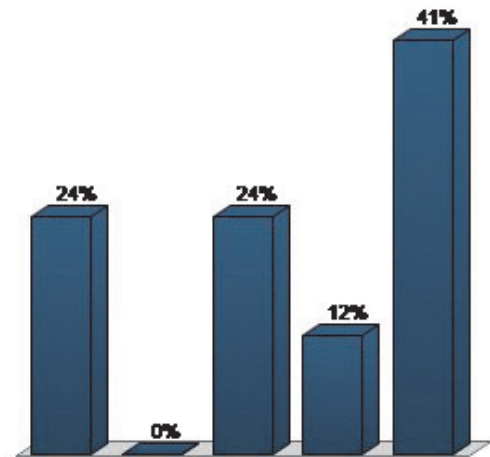
**14. Internal Project #8: Fixture Replacement for Homes Needing Lead Remediation (Multiple Choice)**

Responses		
	Percent	Count
Low Priority	11.76%	2
Somewhat Priority	23.53%	4
Moderate Priority	11.76%	2
Important Priority	17.65%	3
High Priority	35.29%	6
<b>Totals</b>	<b>100%</b>	<b>17</b>



**15. Internal Project #9: Lead Remediation For Qualified Census Tracts (Multiple Choice)**

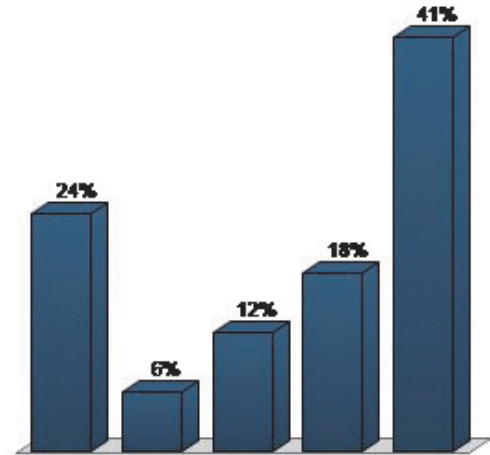
Responses		
	Percent	Count
Low Priority	23.53%	4
Somewhat Priority	0%	0
Moderate Priority	23.53%	4
Important Priority	11.76%	2
High Priority	41.18%	7
<b>Totals</b>	<b>100%</b>	<b>17</b>





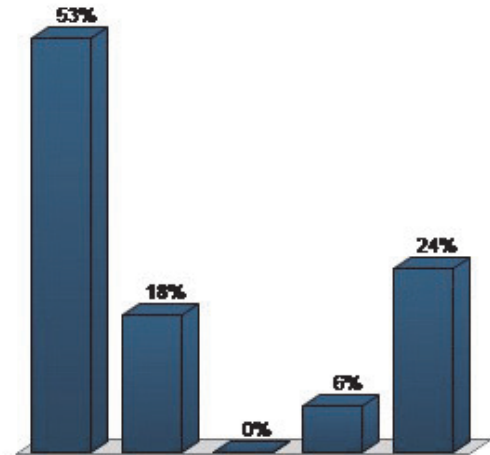
**16. Internal Project #10: Grand River Greenway – Paved Trails, River Access and Parking (Multiple Choice)**

Responses		
	Percent	Count
Low Priority	23.53%	4
Somewhat Priority	5.88%	1
Moderate Priority	11.76%	2
Important Priority	17.65%	3
High Priority	41.18%	7
<b>Totals</b>	<b>100%</b>	<b>17</b>



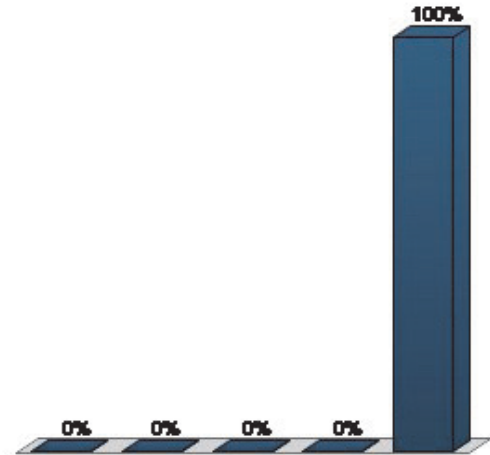
**17. Internal Project #11: Cannonsburg – DNR Trust Fund (Multiple Choice)**

Responses		
	Percent	Count
Low Priority	52.94%	9
Somewhat Priority	17.65%	3
Moderate Priority	0%	0
Important Priority	5.88%	1
High Priority	23.53%	4
<b>Totals</b>	<b>100%</b>	<b>17</b>



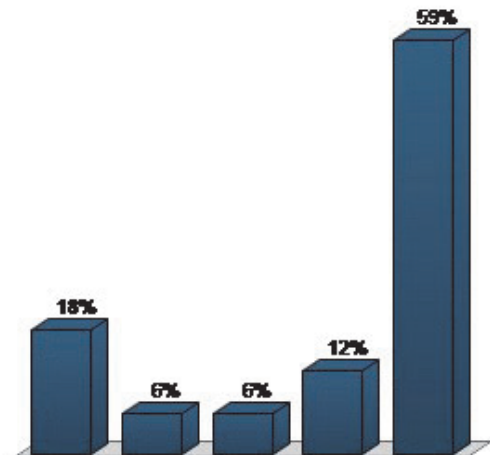
**18. Internal Project #12: School Safety Radio Network (Multiple Choice)**

	Responses	
	Percent	Count
Low Priority	0%	0
Somewhat Priority	0%	0
Moderate Priority	0%	0
Important Priority	0%	0
High Priority	100%	2
<b>Totals</b>	<b>100%</b>	<b>2</b>



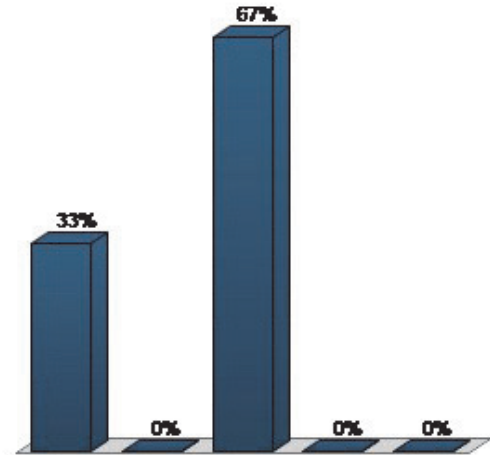
**19. Internal Project #12: School Safety Radio Network (Multiple Choice)**

	Responses	
	Percent	Count
Low Priority	17.65%	3
Somewhat Priority	5.88%	1
Moderate Priority	5.88%	1
Important Priority	11.76%	2
High Priority	58.82%	10
<b>Totals</b>	<b>100%</b>	<b>17</b>



**20. Internal Project #13: Comprehensive Records Digitization (Multiple Choice)**

Responses		
	Percent	Count
Low Priority	33.33%	1
Somewhat Priority	0%	0
Moderate Priority	66.67%	2
Important Priority	0%	0
High Priority	0%	0
<b>Totals</b>	<b>100%</b>	<b>3</b>



**21. Internal Project #13: Comprehensive Records Digitization (Multiple Choice)**

Responses		
	Percent	Count
Low Priority	52.94%	9
Somewhat Priority	35.29%	6
Moderate Priority	11.76%	2
Important Priority	0%	0
High Priority	0%	0
<b>Totals</b>	<b>100%</b>	<b>17</b>

